



01. external view of temp store at Kennington

Typical Temporary Retail Structures:

A commonly employed method of construction for temporary retail premises is the use of a simple modular system, raised on a platform to allow services to be accommodated beneath, and customer parking at grade. Often, as in this case, the existing car parking surface is used and re-lined to ensure ease of use and an efficient customer flow. This is a system that has been used by Tesco in the past as well as by its competitors.

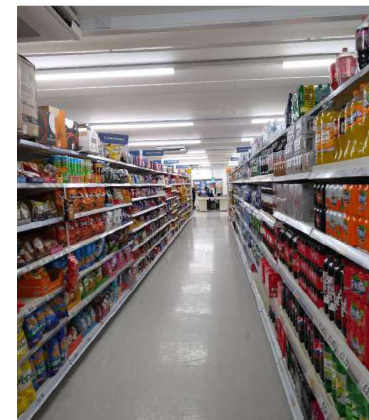
The existing temporary store shown on this page, is currently being used by Tesco at Kennington (18/02598/FUL). This building is to be relocated to the Barking Tesco site, to allow continual operation of Tesco whilst the rest of the site is being developed.



02. view of entrance stair at Kennington



03. internal view of temp store at Kennington



04. view of typical shopping aisle at Kennington